



# INVICTA

## Movement Caliber Cal.Z60

### INFO

Battery: 395 (diameter 9.5mm x 2.6mm / SR 927 SW) Accuracy: +20 / -10 seconds per month

## Movement Caliber : Cal.Z60

Presentation

### Display Elements

Minutes Hand

Hour Hand

Day Retrograde

Second Hand

Centre Stop-Second

Minute Counter

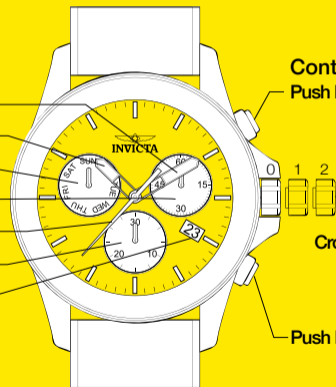
Date

### Control Buttons

Push Button A

Crown Positions

Push Button B



## Movement Caliber : Cal.Z60

### Setting

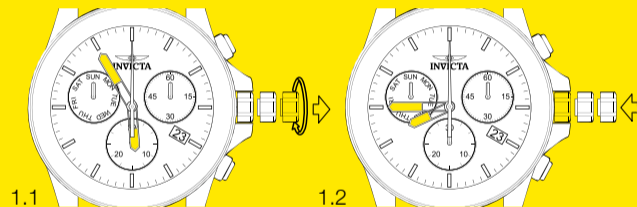
#### Setting the Time

- ➊ Pull out the crown to position 3 (the watch stops).\*
- ➋ Turn the crown until you reach the correct time 8:45.
- ➌ Push the crown back into position 1.\*

Please note:

\* In order to set the time to the exact second, ➊ must be pulled out when the second hand is in position «60».

Once the hour and minute hands have been set, ➌ must be pushed back into position 1 at the exact second.



## Movement Caliber : Cal.Z60

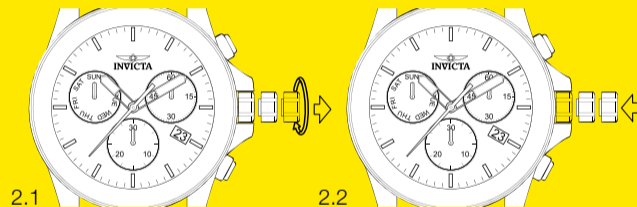
### Setting

#### Setting the Date (Quick Mode)

- 1 Pull out the crown to position 2 (the watch continues to run).
- 2 Turn the crown until the correct date 01 appears.
- 3 Push the crown back into position 1.

Please note:

During the date changing phase between 9 : 45 PM and 12 PM; the date must be set to the date of the following day.



## Movement Caliber : Cal.Z60

### Setting

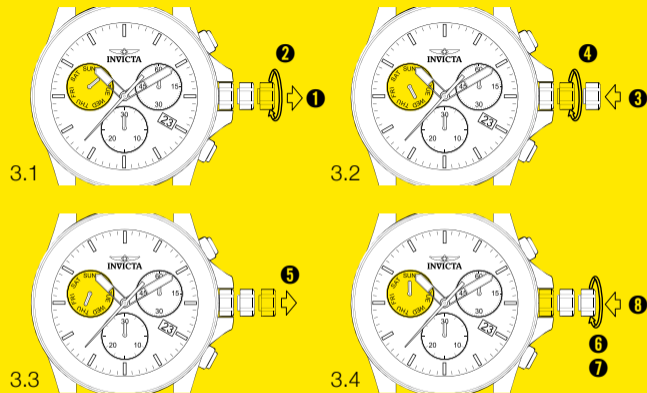
#### Setting the Date, Weekday and Time

Example:

-Date / time on the watch: 17 / 1:25 / MON

-Present date / time: 23 / 20:35 / THU

- 1 Pull out the crown to position 3. (the watch stops)
- 2 Turn the crown anticlockwise until yesterday's weekday WED appears.
- 3 Push the crown to position 2.
- 4 Turn the crown until yesterday's date appears 22.
- 5 Pull out the crown to position 3. (the watch stops)\*
- 6 Turn the crown anticlockwise until the correct date 23 and weekday THU appears.
- 7 Continue to turn the crown until the correct time 8:35 PM appears.\*\*
- 8 Push the crown back into position 1.



Please note:

\* To set your watch to the exact second, please refer to the chapter entitled «setting the time».

\*\* Please observe the AM/PM clock rhythm.

## Movement Caliber : Cal.Z60

### Functions

#### Chronograph: Basic Function (Start / Stop / Reset)

Example:

**❶** Start:

Press push button A.

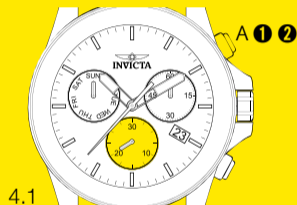
**❷** Stop:

To stop the timing, press push button A once more and read the two chronograph counters: 4 mins / 20 mins / 38 sec / 10 sec

**❸** Zero positioning:

Press push button B.

(The two chronograph hands will be reset to their zero positions).



## Movement Caliber : Cal.Z60

### Functions

#### Chronograph: Accumulated Timing

Example:

- 1 Start: (start timing)
- 2 Stop: (e.g. 15 min 5 sec following 1)
- 3 Restart: (timing is resumed)
- 4 Stop: (e.g. 13 min 5 sec following 3)  
= 28 min 10 sec (The accumulated measured time is shown)\*
- 5 Reset: The two chronograph hands are returned to their zero position.

Please note:

\*Following 4, the accumulation of the timing can be continued by pressing push button A (Restart / Stop, Restart / Stop, ...)



## Movement Caliber : Cal.Z60

### Functions

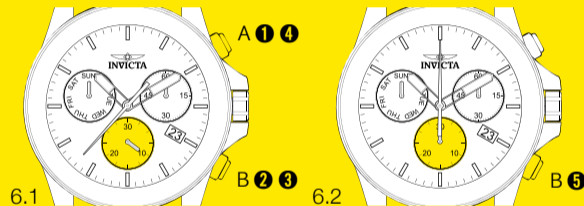
#### Chronograph: Intermediate or Interval Timing

Example:

- 1 Start: (start timing)
- 2 Display interval: e.g. 10 minutes  
10 seconds (timing continues in the background)
- 3 Making up the measured time: (the two chronograph hands are quickly advanced to the ongoing measured time).
- 4 Stop: (Final time is displayed)
- 5 Reset: The two chronograph hands are returned to their zero position.

Please note:

\* Following 3 , further intervals or intermediates can be displayed by pressing push button B (display interval / make up measured time, ...)



## Movement Caliber : Cal.Z60

### Calibration

#### Adjusting the Chronograph Hands to Zero Position

Example:

One or several chronograph hands are not in their correct zero position and have to be adjusted (e.g. following a battery change).

- 1** Pull out the crown to position 3  
(all two chronograph hands are in their correct or incorrect zero position).
- 2** Keep push-buttons A and B depressed simultaneously for at least 2 seconds (the centre stop-second rotates by  $360^\circ$  → corrective mode is activated). Adjusting the centre stop second, Single step A1 x short, Continuous A long, Adjusting the next hand B, Adjusting the 1 → 10 second counter hand (position 6h), Single step A1 x short, Continuous A long
- 3** Returning the crown to position 1  
Termination of the chronograph hands adjustment  
(can be carried out at any time).

